

Lyncourt Union Free School District Capital Building Project



“Preserving the Historic Pride of Our Community”

Discussion Topics



Project Overview

Jay Austin, Superintendent

- Why Now?
 - **School District Growth and Education Enhancements**
 - **Opportunity to finance with no impact to taxpayers**
- Proposed Improvements
- Overall Project Cost & Tax Impact
- Questions & Answers

NO ANTICIPATED TAX IMPACT RESULTING FROM THIS PROJECT

“Preserving the Historic Pride of Our Community”



*Preserving the Historic
Pride in Our Community*

Message from the Superintendent:



Dear Lyncourt Community,

I have had the privilege to serve the Lyncourt Union Free School District for the last 10 years as your superintendent and over the expanse of these years have marveled at how careful we have been in keeping our facilities running smoothly and efficiently. Over the years, we have embarked upon a series of projects, which have allowed us to maintain our level of operation. Those improvements have both expanded our footprint as well as upgraded our current facility. As our population has continued to increase over the last 8 years, we now need to create additional new space for the safety, as well as academic growth, of our staff and students here at Lyncourt Union Free School District.

This new capital improvement project will consist of an additional four classrooms, renovating three existing classrooms, a community fitness center, an outdoor classroom and transforming our courtyard into a playscape recreational area. Lastly, we are also looking at creating a concrete walkway and stairwell to connect the front of our property to the back of our property.

We have this tremendous opportunity to transform the Lyncourt UFSD without any anticipated local tax increase. We are very excited about this opportunity to continue to offer our Lyncourt Community the best learning facility anywhere!

Thank you so much for your continued support, James Austin, Superintendent of Lyncourt UFSD

“Preserving the Historic Pride of Our Community”

Variables that Influence Future School District Growth

The enrollment trends we have seen in the past several years are:

- New population moving into the district who have school aged children
- New population that are of child-bearing age
- Growing population of immigrant residents housing extended family and multi-generations with larger than average families
- Enrollment of students from families moving to the area specifically to attend our school district

Classroom space and program offering trends we have seen and anticipate:

- School program and academic intervention changes in order to remain competitive with the increase of school choice promoted by charter schools
- School community and behavior program offerings necessary to support the emotional needs of our students
- A dramatic increase and ever growing need to provide services to our English Language Learners
- A community need to provide early childhood education to both 4-yr old and 3-yr old Preschoolers
- Proper space for quiet and sensory options to address student behavioral management
- Increased staffing space for Security Resource Officer, Special Education, ENL teachers, community pull-in for child and family services

“Preserving the Historic Pride of Our Community”

Historical Enrollment Trends

THE LYNCOURT UNION FREE SCHOOL DISTRICT PRE-K THROUGH GRADE 8 ENROLLMENT SINCE 2009-2010 HAS INCREASED FROM 328 STUDENTS TO 408. AN INCREASE OF EIGHTY (80) STUDENTS. THIS IS A 25% INCREASE IN OUR STUDENT BODY.



Year	PreK - 8 Enrollment	PreK	K	1	2	3	4	5	6	7	8
2009-10	328	17	39	32	27	29	42	30	28	35	49
2010-11	325	21	30	40	35	26	29	43	32	33	36
2011-12	325	21	30	40	35	26	29	43	32	33	36
2012-13	329	22	39	29	43	32	27	29	40	36	32
2013-14	335	18	39	39	34	40	32	24	30	41	38
2014-15	354	35	33	47	32	39	33	38	29	28	40
2015-16	381	36	56	31	46	36	42	36	40	25	33
2016-17	399	27	65	48	33	37	38	45	32	45	29
2017-18	415	34	39	57	44	37	39	42	43	33	47
2018-19	402	36	47	30	50	41	43	37	41	44	33
2019-20	408	36	47	47	27	47	41	43	34	43	43

“Preserving the Historic Pride of Our Community”

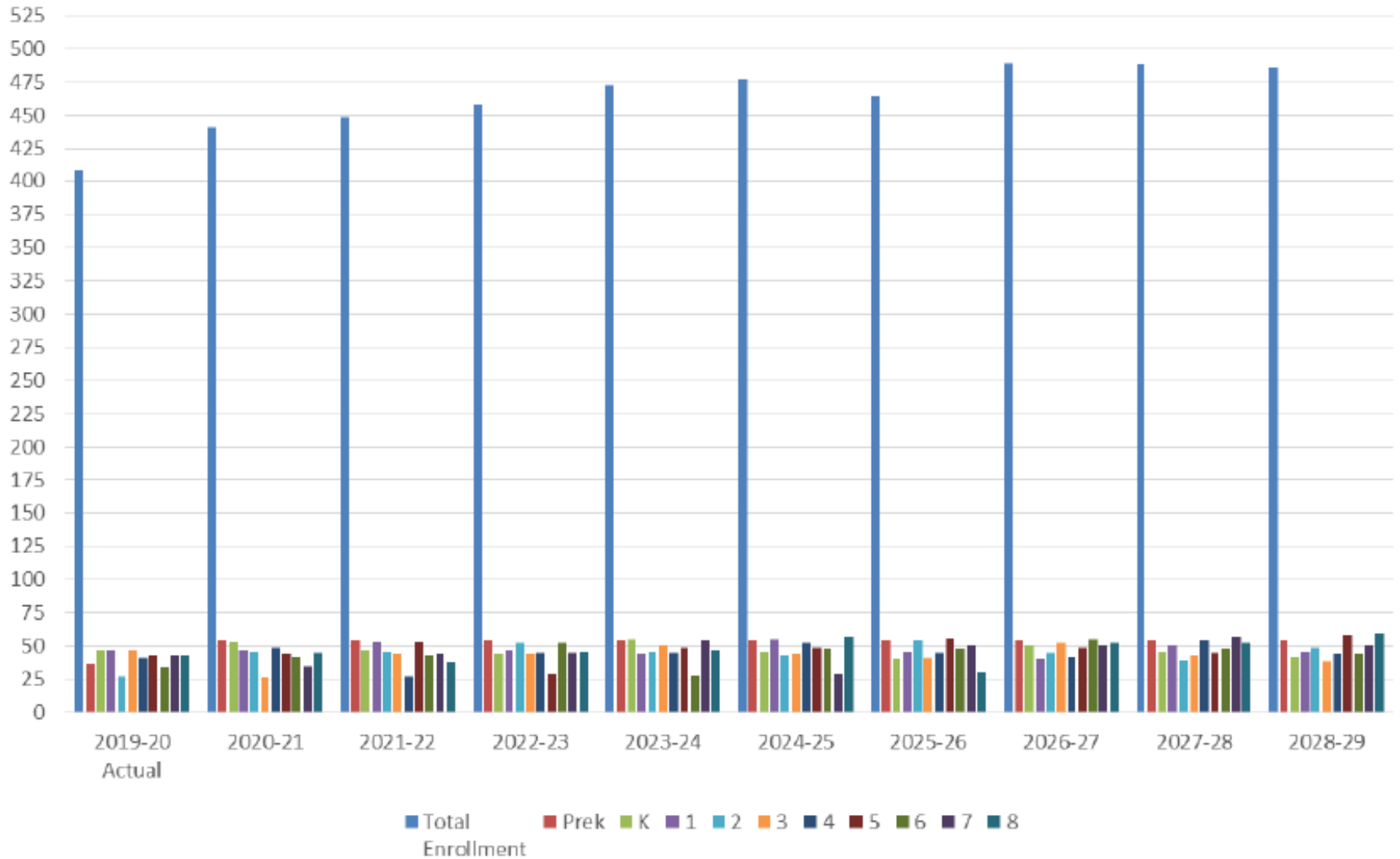
Projected Enrollment

The district enrollment increase has been consistent. Given the trends and demographic of the families moving into the district we anticipate greater need for enhanced programs and classroom space. The simple historical data showing an increase of eighty (80) students in the past ten years supports the belief we will see an additional increase of eighty (80) students over the coming five to ten years. This is further supported through the anticipated return of our 3-year old Pre-K program.

Ten Year Projected Enrollment											
INDEX (based on 10-year average) :			1.603	0.997	0.978	0.962	1.033	1.080	0.978	1.038	1.048
School Year	Total Enrollment	Prek	K	1	2	3	4	5	6	7	8
2019-20 Act	408	36	47	47	27	47	41	43	34	43	43
2020-21	441	54	53	47	46	26	49	44	42	35	45
2021-22	448	54	47	53	46	44	27	53	43	44	37
2022-23	458	54	44	47	52	44	45	29	52	45	46
2023-24	472	54	55	44	46	50	45	49	28	54	47
2024-25	477	54	46	55	43	44	52	49	48	29	57
2025-26	464	54	40	46	54	41	45	56	48	50	30
2026-27	489	54	50	40	45	52	42	49	55	50	52
2027-28	488	54	46	50	39	43	54	45	48	57	52
2028-29	485	54	42	46	49	38	44	58	44	50	60

“Preserving the Historic Pride of Our Community”

Enrollment PreK-8th Projected Data



“Preserving the Historic Pride of Our Community”

Vision for Facilities Improvements



Current Needs:

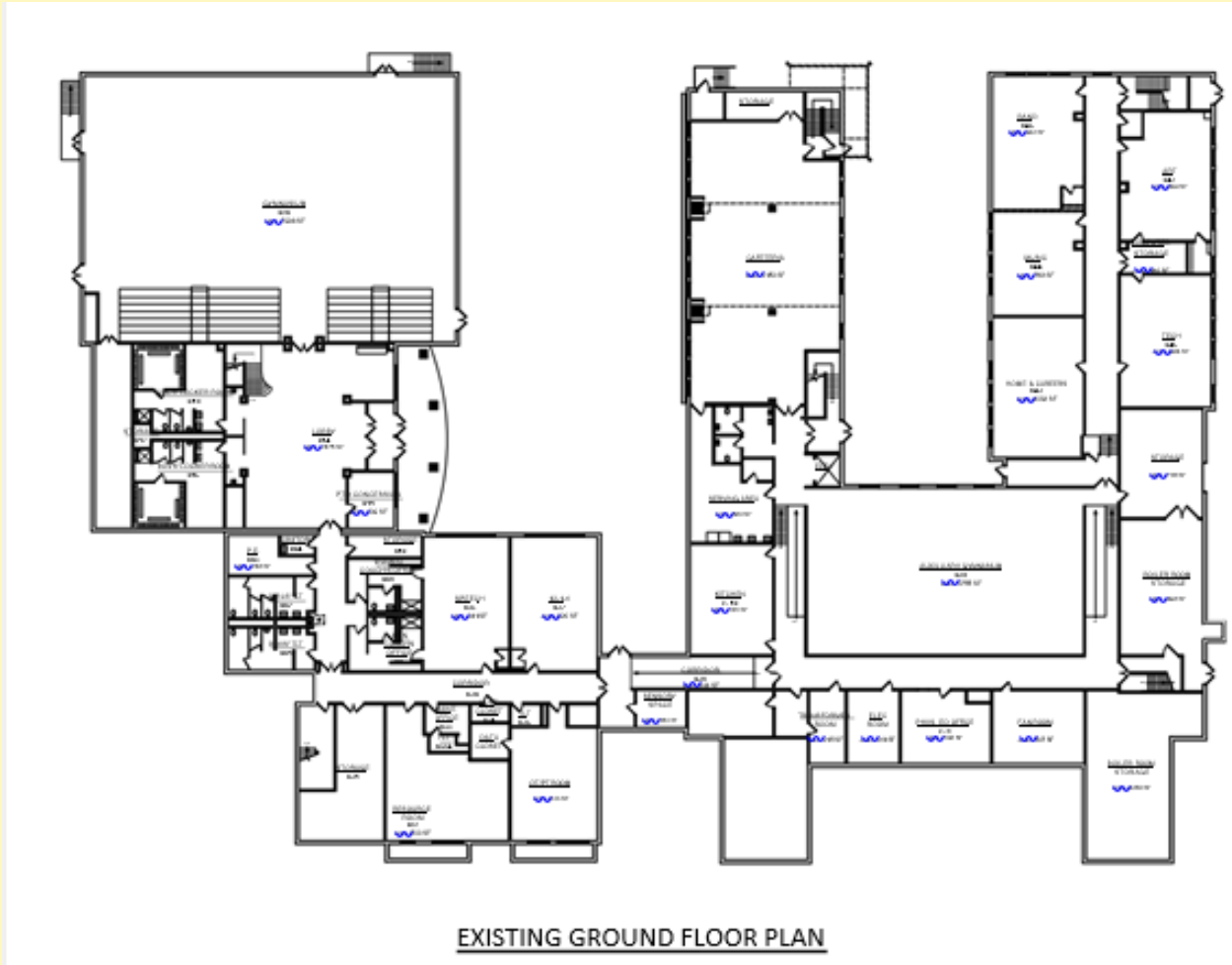
- The current building and instructional space is beyond comfortable learning capacity.
- Two classrooms have been taken over for our 4-year old Pre-K program creating doubled up spaces for Reading, Special Education, Academic Intervention Support and ENL programs.
- We have needs for a growing ENL population that has tripled in the past four years, requiring two full time ENL staff.
- With limited outdoor space and documented high obesity rates, the district desires to create a fitness and wellness center.
- The district has increased the number of days that ARISE, a community child and family services center, is available to our students and their families during the school day from 2 days per week to five days per week.
- The district also added a School Resource Officer that requires confidential space to meet with students and parents. The SRO is currently doubled up with the School Nurse.

The Vision:

- Update some existing spaces to enhance program offerings and address the changing needs of our students while adding much needed instructional space.
- Part of the facilities planned capital improvement project will repurpose two existing classrooms into a fitness and wellness room.
- This fitness/wellness room will contain cardio equipment, yoga mat space, and strengthening and exercise equipment.
- Given our limited outdoor area, this will enhance our offerings in Physical Education class instruction. The space will also provide a quiet stress release area for students working with counselors and the school psychologist.
- Having this fitness/wellness addition to our school facility will provide school-wide opportunity for targeting obesity, strength training, emotional and behavioral outlets and physical activity. Given our high poverty demographics, proper use of fitness equipment and the opportunity to use a fitness gym is something many of our student population may otherwise not experience.
- Another part of the capital improvement plan is to add much needed instructional space.

“Preserving the Historic Pride of Our Community”

Existing Ground Floor Plan



“Preserving the Historic Pride of Our Community”



PROPOSED GROUND FLOOR PLAN

Classroom Addition
❖ (2) New Classrooms

Classroom Renovation
❖ Classrooms modified for new addition

Circulation
❖ New Corridor to connect to addition

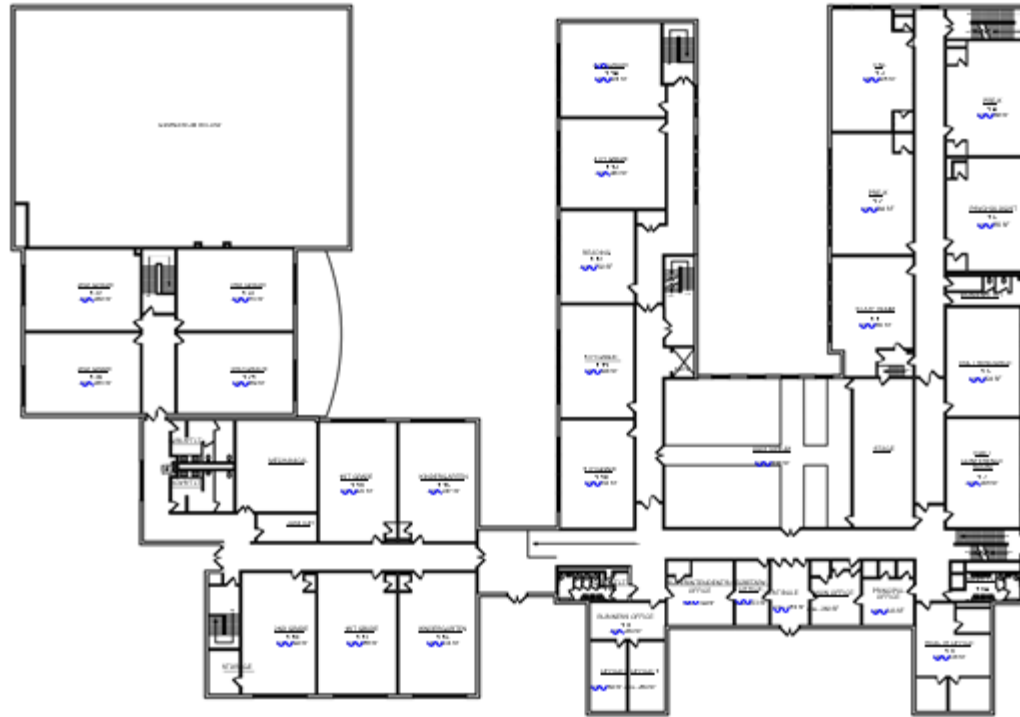
❖ New Stair and lift

❖ New Exterior ramp and stair

Community Fitness and Wellness Center

“Preserving the Historic Pride of Our Community”

Existing First Floor Plan



EXISTING FIRST FLOOR PLAN

“Preserving the Historic Pride of Our Community”



Proposed First Floor

- Classroom Addition**
❖ (2) New Classrooms

- Classroom Renovation**
❖ Classrooms modified for new addition

- Circulation**
❖ New Corridor to connect to addition and connect classroom wings at first floor

“Preserving the Historic Pride of Our Community”

PROPOSED SITE IMPROVEMENTS:



1. New outdoor classroom with amphitheater type seating for classroom instructional use and/or passive recreation.
2. Asphalt walkway/ramps leading to existing playground area.
3. New asphalt perimeter walk around playground and tie into existing concrete walk. Will allow for better access, as well as potential for tricycle circuit.
4. New exterior staircase and/or ramp from upper parking lot to the proposed outdoor learning space Will include safety railings or similar protections along top of parking lot edge. Evergreen vegetation to screen mechanical equipment and adjacent properties.
5. Existing basketball hoop to remain. Plans proposed to extend asphalt behind and along sides of the hoop to increase playable area and potential to add pavement striping.
6. New concrete curb and walkway along north side of building to accommodate infill building addition. Provide new ADA curb ramp and extend parking spaces (net gain 3 spaces - 3 ADA spaces required for total east and north parking lots).
7. Poured in Place or similar Playground surfacing in new courtyard. Potential for additional playground equipment and activities.



“Preserving the Historic Pride of Our Community”



Existing Building Elevation

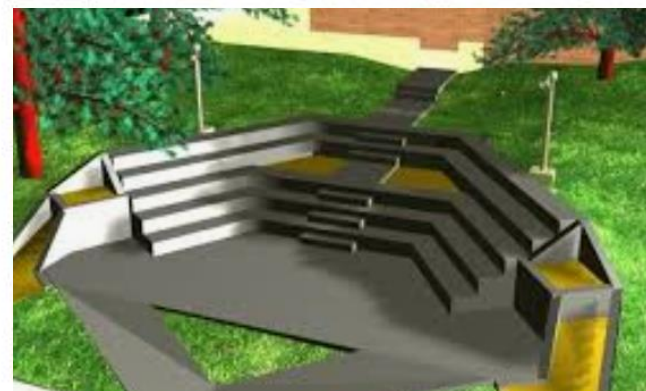


Building Elevation with Proposed Addition

Playscape Recreation Area



Outdoor Classroom



“Preserving the Historic Pride of Our Community”

PROJECT SCOPE-RECAP



- Building addition with 4 classrooms
- Renovate 3 existing classrooms
- Create fitness center for student and community use
- Transform courtyard into playscape recreation area
- Construct outdoor classroom
- Construct concrete walkway and stairs to connect front of building to rear
- Install site lighting, curbs, and sidewalks in rear parking lot
- HVAC Upgrades

How Much Will The Entire Project Cost?

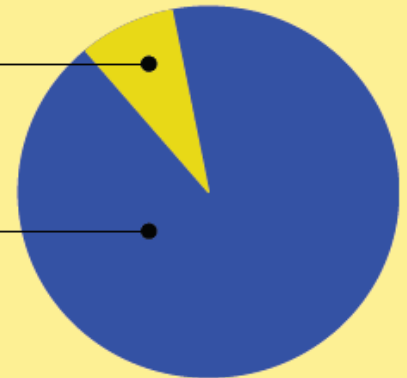


PROJECT FINANCIALS

- Proposed Project Cost \$6,400,000
- State Building Aid 78%
- Capital Reserve Fund \$1,400,000
- Financed Over 15 Years
(Using current tax dollars)

Capital Reserve
22%

State Aid
78%



NO ANTICIPATED LOCAL TAX IMPACT

“Preserving the Historic Pride of Our Community”

How Long Will This Project Take?



Proposed Schedule (Tentative):

- **Vote Date:** December 8, 2020 9:00 am-8:00 pm
- ***Design Phase:*** January 2021 - October 2021
- ***NYSED Review & Approval:*** November 2021 - February 2022
- ***Bid & Award Phase:*** March 2022 - April 2022
- ***Construction Phase:*** May 2022 – October 2023

VOTE



VOTING DAY

Tuesday, December 8, 2020

Lyncourt K-8 School; Main front
entrance vestibule

9:00am - 8:00pm

Qualified voters may obtain applications for absentee ballots from the office of the Clerk of School District during office hours (8am-4pm) as of 11/3/2020.

“Preserving the Historic Pride in Our Community”